

1/4" PNEUMATIC VALVE



USES :

TOP INDUSTRIE 1/4" pneumatic valves work for pressures of up to 500 bar. They are highly reliable and known for their perfect sealing. TOP INDUSTRIE valves are set standards in the high pressure industry.

FEATURES :

- Works for pressures between 0 and 500 bar
- Separate guide for stem and actuator.
- Material : 1.4404 (316L)
- Works for both liquids and gases.
- Metal/Metal sealing.
- Maximum temperature : 100° C/212 F
- HP Tubing : 1/4"
- HP connection : gland nut
- Orifice diameter 4mm

- Normally Open valve (NO)

- Normally Closed valve (NC)

- Weepers for leak detection

- All our valves are equipped with collars and gland nuts.

OPTIONS :

- Alternative materials: Hastelloy B2, C276, Titanium, etc.

- Limit switches

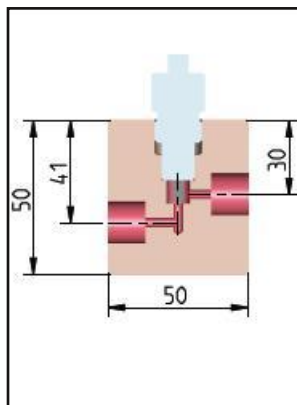
- Maximum temperatures of up to 250° C

- Pointeau stellite en cas de forte sollicitation

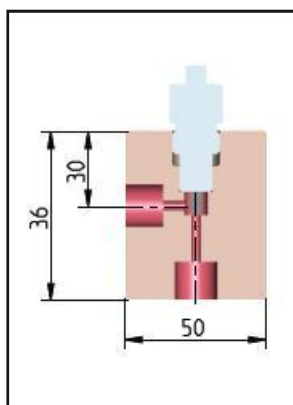
- Stellite stem in case of heavy duty usage

- ATEX on demand

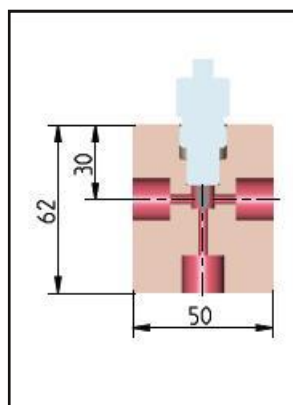
PRESSURE	TUBE HP Ø EXT.		TYPE	REFERENCE	
	bar / psi	inch		mm	Normally Open
500 / 7250	1 / 4 "	6.35	1	410 13 00	410 14 00
			2	410 23 00	410 24 00
			3	410 33 00	410 34 00
			4	410 43 00	410 44 00
			5	410 53 00	410 54 00



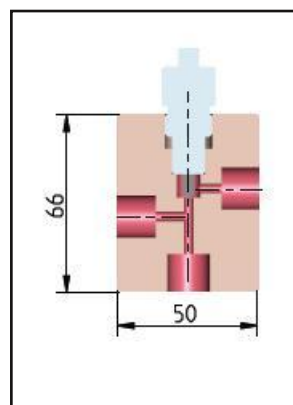
TYPE 1



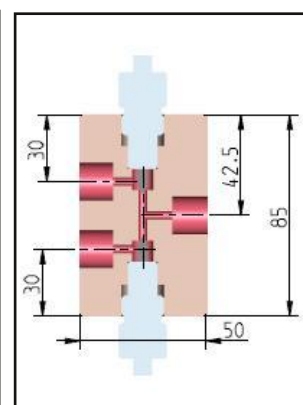
TYPE 2



TYPE 3



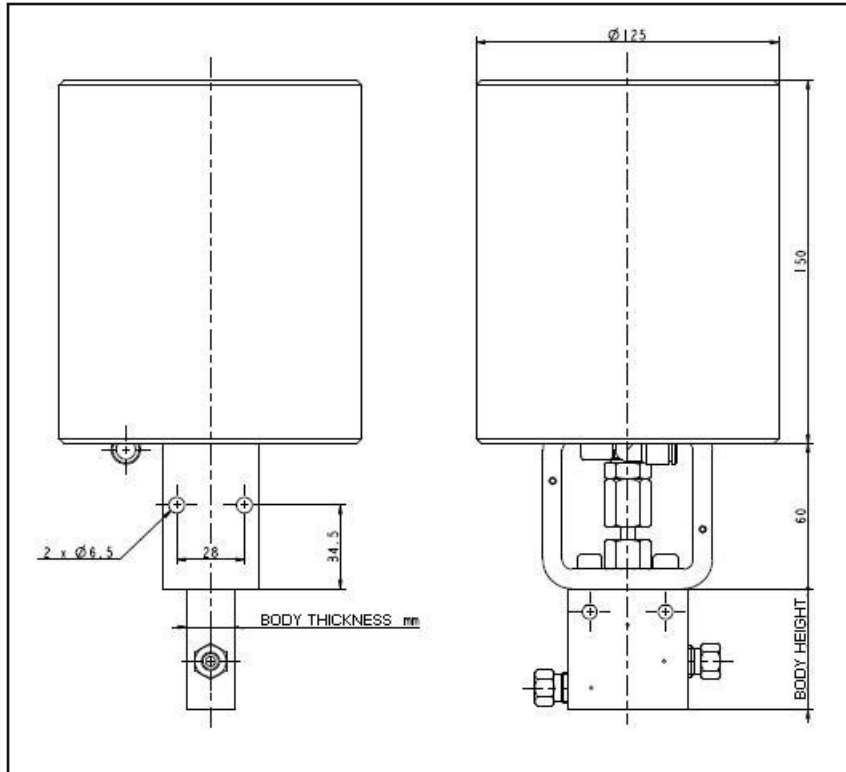
TYPE 4



TYPE 5



1/4" PNEUMATIC VALVE



- Tube mounting : See technical info (B.12)
- Air pressure : mini 5 bar (for NF)
- maxi 7 bar
- Air connection : 1/4" gas
- Body dimensions (See technical information sheet A3F)
- Spare parts 1 to 6 (See technical information sheet A3F)

SPARE PARTS	KEY	NAME	REFERENCE	MATERIAL
	7	SCREW CHC M4	410 14 20	1. 4542
	8	PNEUMATIC HEAD	410 14 13 A	1.4305
	9	PNEUMATIC STEM	410 14 12 A	ALUMINIUM
	10	PROFILE	410 14 11 C	STAINLESS STEEL
	11	PISTON HEAD	410 14 09 A	STAINLESS STEEL
	12	NUT Hm M14	410 14 10	STAINLESS STEEL
	13	SCREW CHC M8 x 15	410 14 19	ALUMINIUM
	14	LOWER FLANGES	410 14 02 B	ALUMINIUM
	15	GASKET	410 14 21	NITRILE
	16	DAMPER	410 14 29 A	TEFLON
	17	PISTON ROD	410 14 07 C	STAINLESS STEEL
	18	O-RING GASKET	410 14 22	STAINLESS STEEL
	19	BREAK NUT M14	410 14 15	NITRILE
	20	GUIDANCE STRIPS	420 14 24	STAINLESS STEEL
	21	PISTON	410 14 04	STEEL
	22	PISTON BODY	410 14 03 B	STEEL
	23	O-RING GASKET	410 14 17	ALUMINIUM
	24	INTERNAL CIRCLIPS	410 14 23	STAINLESS STEEL
	25	LOWER FLANGES	410 14 01	ALUMINIUM
	26	COMPRESSION SPRING	410 14 14	ALUMINIUM
	26	COMPRESSION SPRING	410 14 26	STAINLESS STEEL
	27	BANJO	45SCD6	

▪ For spare parts 1 to 6 (lookup technical sheet A3F)

In view of possible technological advances in our production methods, the products described in this manual are liable to be modified without prior notice.

