

1/8" - 1/16" HAND VALVE



USES :

TOP INDUSTRIE 1/8" - 1/16" hand valves work for pressures up to 2000 bar. They are highly reliable, and renowned for their perfect sealing. TOP INDUSTRIE valves set standards in the high-pressure industry.

FEATURES :

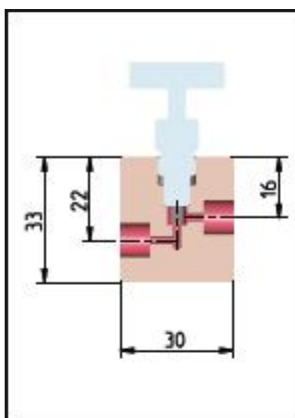
- Work at all pressures between 0 and 2000 bar (0 - 29 000 psi)
- Non rotating stem
- Material : 1.4571 (316 Ti)
- Work with both liquids and gases.
- Metal/Metal sealing.
- Maximum temperature : 170° C/ 212 F
- HP tubing : 1/8" or 1/16" O.D
- HP connection : gland nut.
- No play between stem and handle.

- Weepers for leak detection.
- Standard or regulating stem (see table).
- All our valves are equipped with collars and gland nuts.
- Orifice diameter: 1mm or 1.5mm

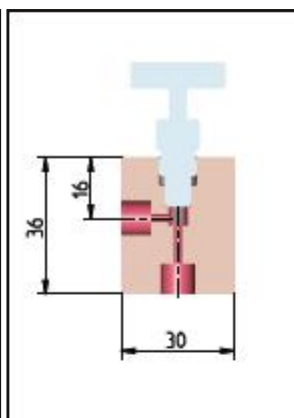
OTHER OPTIONS :

- Alternative materials : Hastelloy B2, C276, titanium, etc.
- Rotating stem
- Maximum temperatures of up to 300°C using a graphite joint.
- ATEX on demand

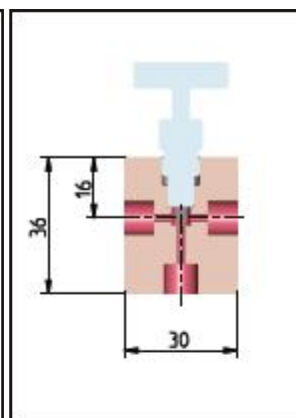
PRESSURE	TUBE HP Ø EXT.		TYPE	Wheight	REFERENCE Orifice Ø 1 mm		REFERENCE Orifice Ø 1,5 mm
	bar / psi	inch			mm	standard	
1000 14500	1/8"	3,2	1	120	910 10 00	912 10 00	917 10 00
			2	130	910 20 00	912 20 00	917 20 00
			3	130	910 30 00	912 30 00	917 30 00
			4	140	910 40 00	912 40 00	917 40 00
			5	180	910 50 00	912 50 00	917 50 00
1000 14500	1/16"	1,6	1	120	110 10 00	112 10 00	117 10 00
			2	130	110 20 00	112 20 00	117 20 00
			3	130	110 30 00	112 30 00	117 30 00
			4	140	110 40 00	112 40 00	117 40 00
			5	180	110 50 00	112 50 00	117 50 00
2000 29000	1/16"	1,6	1	120	210 10 00	212 10 00	217 10 00
			2	130	210 20 00	212 20 00	217 20 00
			3	130	210 30 00	212 30 00	217 30 00
			4	140	210 40 00	212 40 00	217 40 00
			5	180	210 50 00	212 50 00	217 50 00



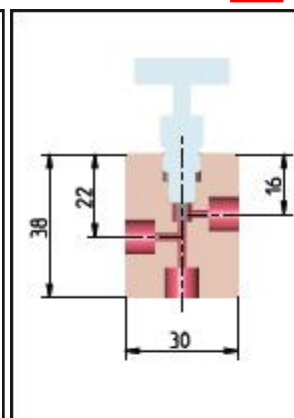
TYPE 1



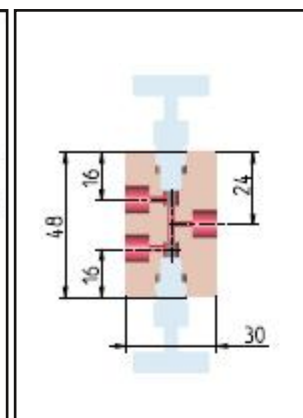
TYPE 2



TYPE 3



TYPE 4



TYPE 5



1/8" - 1/16" HAND VALVE

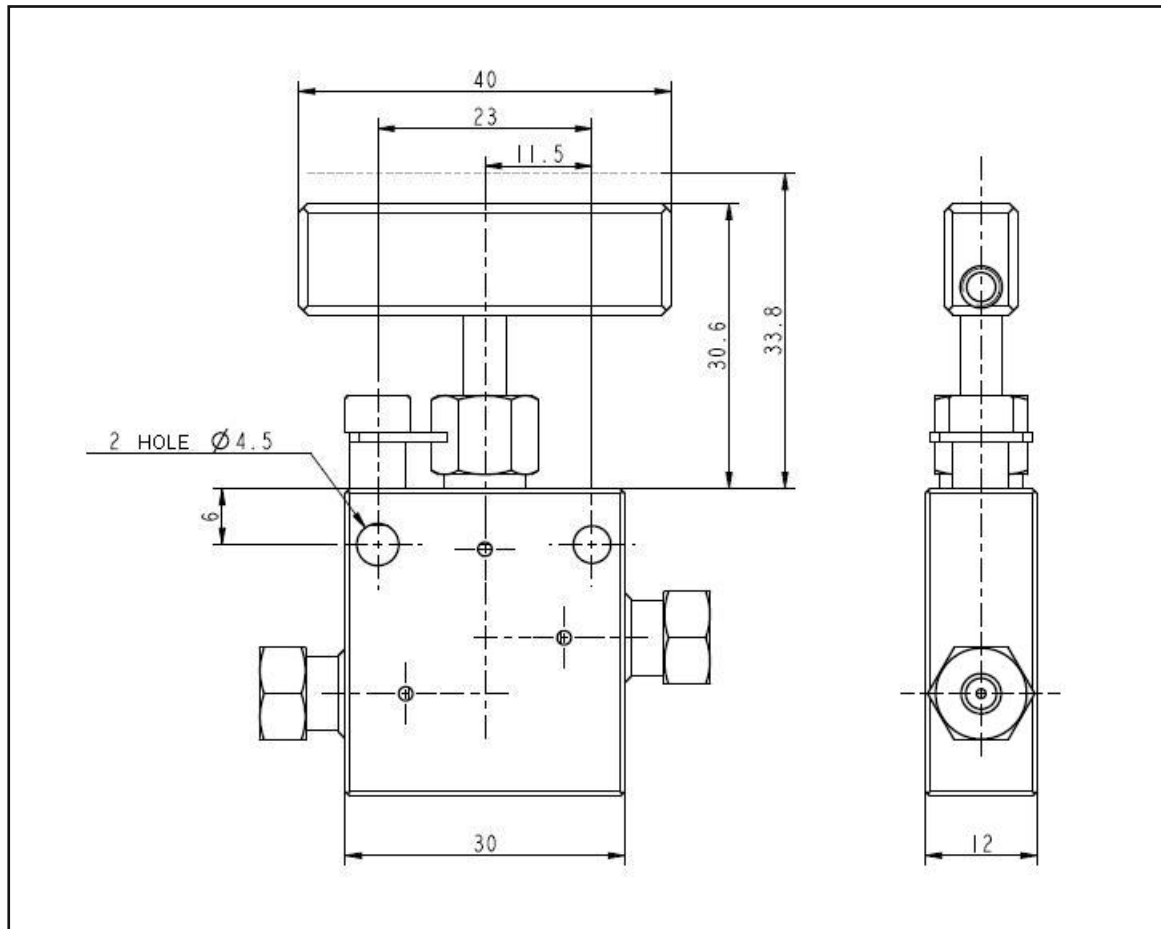
MOUNTING POSSIBILITIES :

Panel mounting : Two M4 screws.

With bracket : Two $\varnothing 4$ holes.

H.P connection: see technical sheet B4F

Stem movement : 3,5 mm / 4,6 turns



SPARE PARTS	KEY	QUANTITY	NAME	REFERENCE	MATERIAL
	01	1	HANDLE	910 10 01	A U4G
	02	1	PACKING BOX	910 10 02	1.4305
	03	1	STEM STD	910 10 15	1.4542
	03	1	DOSAGE STEM	912 10 15	1.4542
	04	1	UPPER COLLAR	910 10 06	1.4542
	05	1	GASKET	910 10 07	PTFE
	06	1	LOWER COLLAR	910 10 08	1.4542
	07	1	BODY	910 10 09	1.4571
	08	2	SCREW Hc M 4 x 5	910 10 10	STAINLESS STEEL
	09	1	LOCKING DEVICE	910 10 11	STAINLESS STEEL
	10	1	SPACER	910 10 12	A U4G
	11	1	SCREW CHc M 4 x 10	910 10 13	STAINLESS STEEL
	12		BINDING SCREW 1/8" HP	(*)20 01 00	1.4542
13		GLAND NUT 1/8" HP	(*)20 02 00	1.4404	

*To order a part : replace the asterix by the first 3 digits of the supplied valve's reference number.

In view of possible technological advances in our production methods, the products described in this manual are liable to be modified without prior notice.

