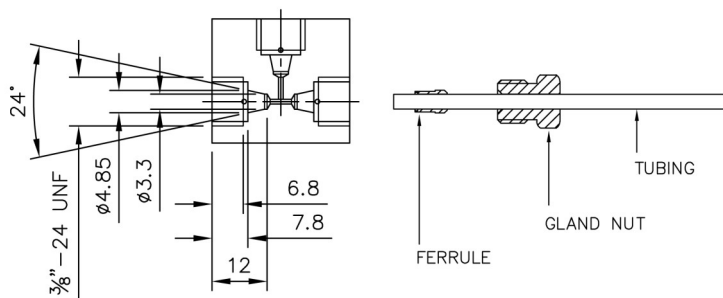


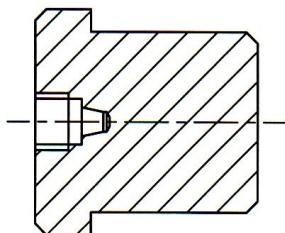
# TEDELFI

## Assembly of LV\* type 1/16" and 1/8" Fittings



1. Cut the tubing at a right angle and de-burr the end of the tube
2. Slide the gland nut and the ferrule over the end of the tube
3. Push the tube into the connection until the tube bottoms out
4. Slide the ferrule and the gland nut over the tubing and tighten until hand tight
5. Now tighten the gland nut with a spanner 1½ turns to reach the required tightening

This procedure is the same for all laboratory valves and fittings, however we strongly recommend for 1/16" LV\* sizes to make the connection in assembly tool number T1100



Tool T1100

LV\* = Laboratory Valve type

*Can't find what you need?  
Then call 01296 431804*