

Prüfbankventile – Test Bench Valves – Vannes de Bancs d’essai

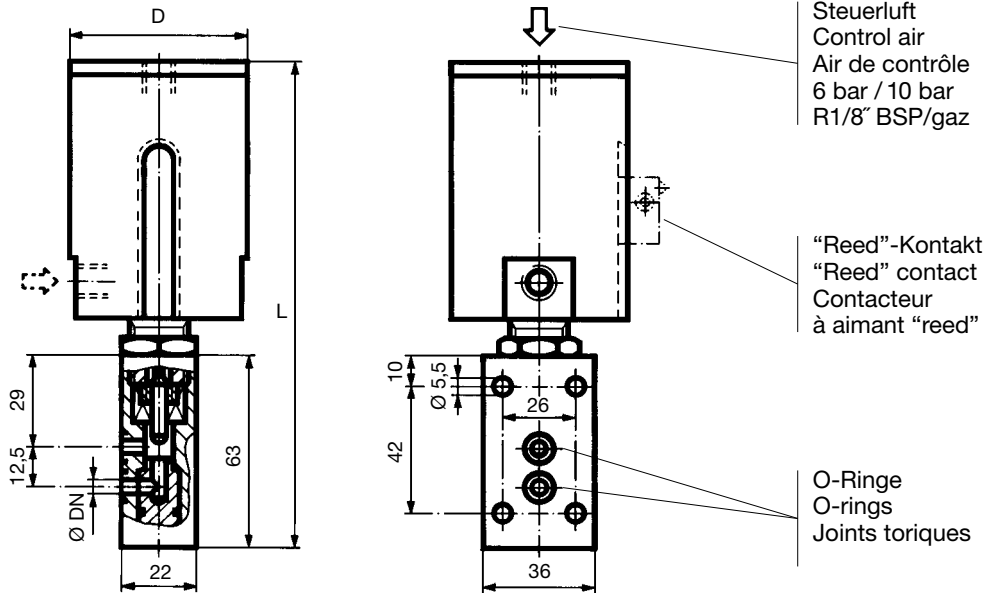
max. 300 bar
-40 – +120 °C

Werkstoff: 1.4571 Material: AISI 316Ti Matériau: Z6 CNDT 17.12

Prüfbankventile mit schlankem pneumatischem Antrieb

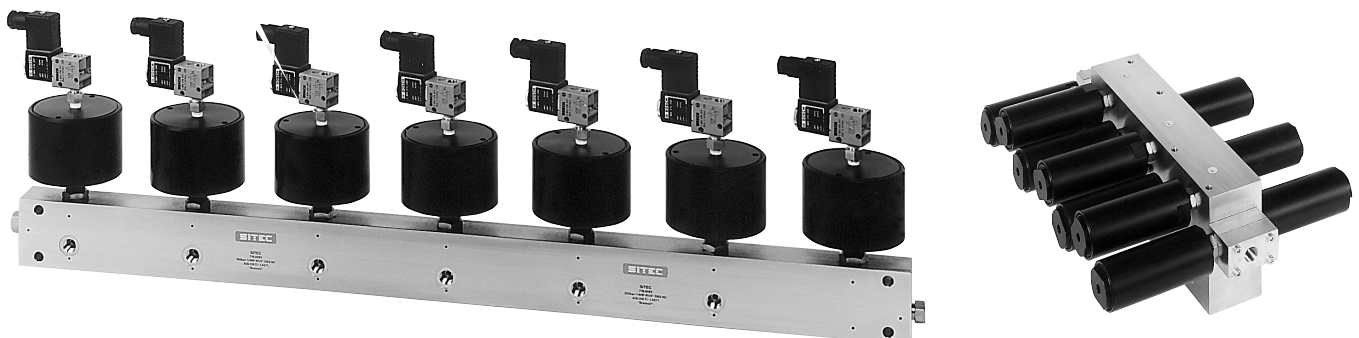
Test bench valves with slim pneumatic actuator

Vannes de bancs d’essai avec commande pneumatique svelte



Druck Pressure Pression	DN Ø Orifice Pass.	Anschlüsse Connections Raccords	Antrieb Actuator Entraînement	D	L	Artikel-Nr. Part No. Référence
bar	mm			mm	mm	
120	4	O-Ring	NO – 6 bar/Magnet	Ø 50	200	719.0099
120	4	O-Ring	NC – 6 bar/Magnet	Ø 50	200	719.0100
280	3	O-Ring	NO – 10 bar/Magnet	Ø 50	200	719.0079
280	3	O-Ring	NC – 10 bar/Magnet	Ø 50	200	719.0080
280	4	O-Ring	NO – 10 bar/Magnet	Ø 50	200	719.0113
280	4	O-Ring	NC – 10 bar/Magnet	Ø 50	200	719.0114
300	4	Nipple Ø 6	NC – 10 bar	Ø 50	200	719.0064
300	4	Nipple Ø 6	NO – 10 bar	Ø 50	200	719.0065
160	4	Nipple Ø 6	NO – 6 bar	Ø 60	100	719.0089
160	4	Nipple Ø 6	NC – 6 bar	Ø 60	100	719.0090
200	4	O-Ring	NO – 6 bar	Ø 60	160	719.0069
-0.8 – +200	4	O-Ring	NO – 6 bar	Ø 60	160	719.0069-2
200	4	O-Ring	NC – 6 bar	Ø 60	160	719.0068
-0.8 – +200	4	O-Ring	NC – 6 bar	Ø 60	160	719.0068-2

Mehrfach-Ventilleisten – Multi-valve-headers – Distributeurs multi-vannes



Prüfbankventile – Test Bench Valves – Vannes de Bancs d'essai

Werkstoff: 1.4571 Material: AISI 316Ti Matériau: Z6 CNDT 17.12

max. 3000 bar
max. 45,000 PSI**Tieftemperatur-Prüfbankventile****Low temperature test bench valves****Vannes de bancs d'essai pour basses températures**

Druck Pressure Pression	DN Ø Orifice Pass.	Anschlüsse Connections Raccords	Antrieb Actuator Entraînement	D	Artikel-Nr. Part No. Référence
bar	mm			mm	
1000	2	1/4 HP	NC – 6 bar	Ø 80	719.3314-MD
1000	2	1/4 HP	NC – 6 bar	Ø 80	719.3324-MD
1000	2	1/4 HP	NO – 6 bar	Ø 80	719.3363-MD
1000	2	1/4 HP	NC – 6 bar	Ø 80	719.3364-MD

**Prüfbankventile 719.0032 + 719.0033 mit zusätzlichen Anschlüssen****Test bench valves 719.0032 + 719.0033 with additional connections****Vannes 719.0032 + 719.0033 avec raccords supplémentaires**

Druck Pressure Pression	DN Ø Orifice Pass.	zus. Anschlüsse add. Connections Raccords suppl.	Antrieb Actuator Entraînement	D	Artikel-Nr. Part No. Référence
bar	mm			mm	
-0.8 – +20	3	2 x Sw Ø 6 mm	NC – 5 bar	Ø 35	719.0032-2-11
-0.8 – +20	3	2 x Sw Ø 6 mm	NC – 5 bar	Ø 35	719.0032-2-12
-0.8 – +20	3	1 x Sw Ø 6 mm	NC – 5 bar	Ø 35	719.0032-2-13
-0.8 – +20	3	1 x Sw Ø 6 mm	NC – 5 bar	Ø 35	719.0032-2-14
-0.8 – +20	3	1 x Sw Ø 6 mm	NO – 5 bar	Ø 35	719.0033-2-14

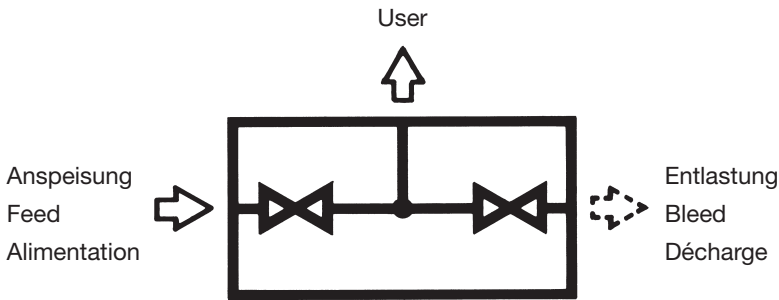
**Prüfbankventile mit hydraulischem Antrieb****Test bench valves with hydraulic operator****Vannes de bancs d'essai avec commande hydraulique**

Druck Pressure Pression	DN Ø Orifice Pass.	Anschlüsse Connections Raccords	Antrieb Actuator Entraînement	D	Artikel-Nr. Part No. Référence
bar	mm			mm	
300	4	Lens rings	NO – 40 bar	Ø 32	719.0021
300	4	in block	NC – 15 bar	Ø 60	719.0027
300	4	in block	NO – 15 bar	Ø 60	719.0026
450	3	1/4 HP	NO – 30 bar	Ø 32	719.0041
1000	12	11/16 HP	NO – 150 bar	Ø 58	715.3268
1000	1.5	1/8 HP	NO – 40 bar	Ø 32	719.0044
2000	3	Lens rings	NO – 100 bar	Ø 32	719.0143
3000	5	9/16 HP	NO – 250 bar	Ø 32	719.0043-Typ1
3000	5	9/16 HP	NO – 250 bar	Ø 32	719.0043-Typ6



3/2-Wege Ventile – 3/2-Way Valves – Vannes 3/2-voies max. 2000 bar
max. 30,000 PSI
 Werkstoff: 1.4571 Material: AISI 316Ti Matériau: Z6 CNDT 17.12

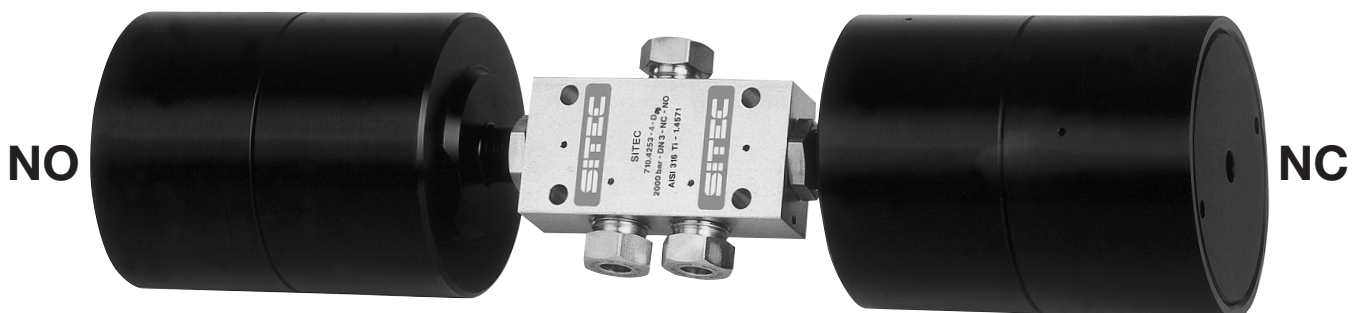
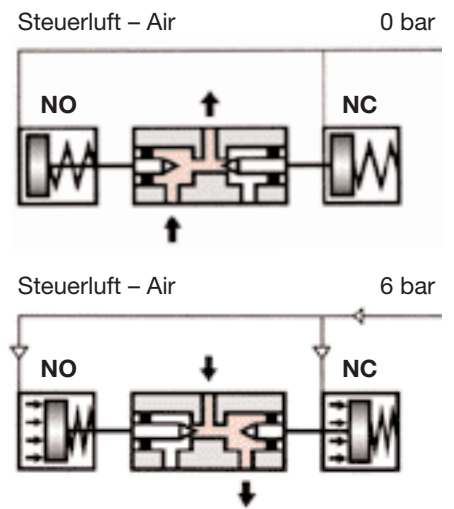
3/2-Wege Handventile
Block and bleed valves
Vannes d'alimentation et de décharge



Druck Pressure Pression bar	DN Ø Orifice Pass. mm	Anschlüsse Connections Raccords	Antrieb Actuator Entraînement	Artikel-Nr. Part No. Référence
1000	2	1/4 HP	manual	719.0066
1000	2	1/4 HP	manual	710.3350

Pneumatisch betätigte 3/2-Wege HD-Ventile
Air actuated 3/2-way HP-valves
Vannes 3/2-voies HP pneumatiques

Druck Pressure Pression bar	DN Ø Orifice Pass. mm	Anschlüsse Connections Raccords	Antrieb Actuator Entraînement	D mm	Artikel-Nr. Part No. Référence
400	8/3	Nipple Ø 12/Ø 8	6 bar	Ø 89	710.0128-MVQ
1000	2	1/4 HP	6 bar	Ø 89	710.3353-4
1000	5	9/16 HP	6 bar	Ø 89	710.3153-4D
1000	5	3/8 HP	6 bar	Ø 89	710.3253-4D
2000	3	9/16 HP	6 bar	Ø 89	710.4153-4D
2000	3	3/8 HP	6 bar	Ø 89	710.4253-4D
2000	3	1/4 HP	6 bar	Ø 89	710.4353-4D

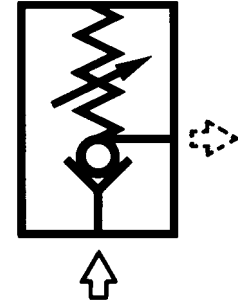


Druckbegrenzung – Pressure Limiters – Limiteurs de pression

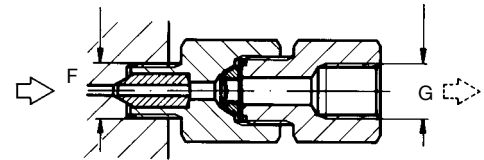
Werkstoff: 1.4571 Material: AISI 316Ti Matériau: Z6 CNDT 17.12

max. 7000 bar
max. 100,000 PSI**Überströmventile – Relief valves – Soupapes de décharge**

Einstellbereich Pressure range Plage de tarage	DN Ø Orifice Pass.	Anschlüsse Connections Raccords	Artikel-Nr. Part No. Référence	Durchfluss Flow Débit
bar	mm			m ³ /h
40–120	4	Sw Ø 8 mm	729.4004	0.39
40–120	4	1/4 HP	729.4004-1	0.39
100–500	4	Sw Ø 8 mm	729.4003	0.39
100–500	4	1/4 HP	729.4003-1	0.39
100–500	4	R1/4" BSP/gaz	729.4003-R1/4	0.39
300–800	3	1/4 HP	729.4003-2	0.18
500–1300	6	3/8 HP	729.4011	0.83
700–1500	3	1/4 HP	729.4003-3	0.18
1000–2500	3	1/4 HP	729.4003-7	0.18
1100–2000	6	3/8 HP	729.4010	0.83
2000–4000	5	3/8 HP	729.4008	0.58

**Berstscheibenhalter – Safety heads – Supports de disques de rupture**

Druck Pressure Pression	HP Rohrverschraubung HP Tube Connections Raccordements HP			DN Ø Orifice Pass.	Artikel-Nr. Part No. Référence	
bar	inch	mm	F	mm	G = M16 x 1.5	G = R3/8" BSP
2000	9/16	14.3	M26x1.5	8	720.5013	720.5013-2
2000	3/8	9.52	M20x1.5	5	720.5023	720.5023-2
4000	9/16	14.3	M26x1.5	5	720.5012	720.5012-2
4000	3/8	9.52	M20x1.5	3	720.5022	720.5022-2
4000	1/4	6.35	M16x1.5	3	720.5032	720.5032-2
7000	1/4	6.35	M16x1.5	3	720.5632	720.5632-2

**Berstscheiben – Rupture discs – Disques de rupture**

Berstdruck – Burst pressure – Pression de rupture											
Freier Querschnitt Ø 6.35 mm, Free opening diameter Ø 6.35 mm, Diamètre libre Ø 6.35 mm											
10,	20,	25,	30,	50,	60,	70,	80,	100,	110,	120,	flach, flat, plat
150,	170,	200,	225,	240,	250,	300,	330			bar	
350,	375,	400,	450,	460,	480,	500,	550,	600,	650,	700,	Hütchenform Disques bombés Formed discs
750,	800,	850,	900,	1000,	1100,	1200,	1250,	1450,	150,	1700,	
1750,	2000,	2250,	2400,	2500,	2800,	3000,	3250,	3500,	3800,	4000	
Freier Querschnitt Ø 2.4 mm, Free opening diameter Ø 2.4 mm, Diamètre libre Ø 2.4 mm											
4250,	4500,	5000,	5500,	6000,	6600,	7000				bar	

Sicherheitsventile – Safety relief valves – Soupapes de sécurité

Einstellbereich Pressure range Plage de tarage	DN Ø Orifice Pass.	Anschlüsse Connections Raccords	Artikel-Nr. Part No. Référence		Durchfluss Flow Débit	
			Flüssig Liquids	Gas Gaz	Kv m ³ /h	Cv g/min
50–700	1.6	1/4 HP – R1/4" BSP/gaz	720.5231-1	720.5231-2	0.04	0.05
300–2500	1.6	1/4 HP – R1/4" BSP/gaz	720.5431-1	720.5431-2	0.04	0.05
300–2500	2.8	3/8 HP – R1/4" BSP/gaz	720.5421-1	720.5421-2	0.15	0.18
2000–4400	1.6	9/16 HP – R1/4" BSP/gaz	720.5511-1	720.5511-2	0.04	0.05
2000–4400	1.6	3/8 HP – R1/4" BSP/gaz	720.5521-1	720.5521-2	0.04	0.05
2000–4400	1.6	1/4 HP – R1/4" BSP/gaz	720.5531-1	720.5531-2	0.04	0.05

